

**Business Office Update
February 26, 2018 Meeting**

Additional Plow Truck with a Salt Spreader

- Dr. Lind and I are recommending that the board purchase a 2018 Ford F250 XL truck to be used as a second plow truck. Delivery timeframe would be 12-14 weeks from the date of the order. If the board would approve this purchase at the February 26, 2018 board meeting, we could anticipate delivery by mid-June, 2018.
- The total estimated cost is \$39,771. A detailed cost estimate is attached.
- We are currently paying \$1250 each time our parking lots are salted. This purchase would reduce the labor cost of paying an outside company to salt. Our only additional expense would be the cost of the salt.

Millburn Middle School Gymnasium Bleachers

- We have been gradually replacing the bleacher seats at Millburn Middle School (primarily in the west gym) with heavyweight reinforced plastic seats over the last 4-5 years. The original bleachers were a lightweight plastic bleacher that over time became brittle and began to crack. These cracks developed into holes in the bleacher seats and are now a significant safety hazard.
- When we have been replacing the seats, we have been replacing the entire row of seats. When we have a damaged seat, it requires removing the seats in the entire row because the seats are connected and the only way to remove them is to start at the end of the row.
- We currently have damaged seats in both the west gym and the east gym (photos are attached to this report). Dr. Lind and I are recommending that the board approve the expenditures detailed below. The work would be completed by J & D Enterprises. J & D focuses on seating and safety solutions. This will complete the replacement of all the seats in both gymnasiums. We have worked with approximately four different bleacher companies over the past six years and have found J & D Enterprises to be the most economical and reliable of any of the companies we have used.
 - West Gym - \$16,571.80
 - 266 seat modules
 - 40 pair of seat end caps
 - 40 starter brackets
 - East Gym - \$11,248.80
 - 172 seat modules
 - 26 pair of seat end caps
 - 26 starter brackets

Millburn Elementary Water Issues

- The issue of sediment in the water system at Millburn Elementary School is getting worse. The chlorinator and the unit that removes the majority of the smell from the water have been recently checked and both are working as designed. We are in the process of getting pricing on a filtration system that would remove the black sediment from the water that gives it a grayish appearance.
- I will keep the board informed as I get more information.

Coop 90's Insurance Update

- Wilmette School District 39 joined Coop 90's in September, 2017.
- The Coop 90's Board met on February 22, 2018 to look at plan changes and rates for the period beginning June 1, 2018 through May 31, 2019
 - PPO Health Insurance
 - No plan changes were recommended for 2018-19
 - The board voted to increase the premiums of the PPO plan by 3%
 - HMO Health Insurance
 - No plan changes were recommended for 2018-19
 - Since the HMO plan is fully insured, Blue Cross/Blue Shield sets the rates for this plan. The board accepted the 2.4% increase from Blue Cross/Blue Shield.
 - Delta Dental Insurance
 - The board approved a 0% increase in premiums for 2018-19. Additionally, the board also approved the following enhancement to the plan.
 - Members will be able to take their unused annual maximum benefit to the future years. This allows members to increase their annual maximum from the current \$2000 per year to up to \$4000 using this feature.
 - Delta Vision
 - The Delta Vision plan had previously been approved at a 0% increase in premiums with no change in the plan design.
 - Madison National Life/National Insurance Services
 - The life insurance is in year two of a two-year rate. There was no increase for 2018-19.

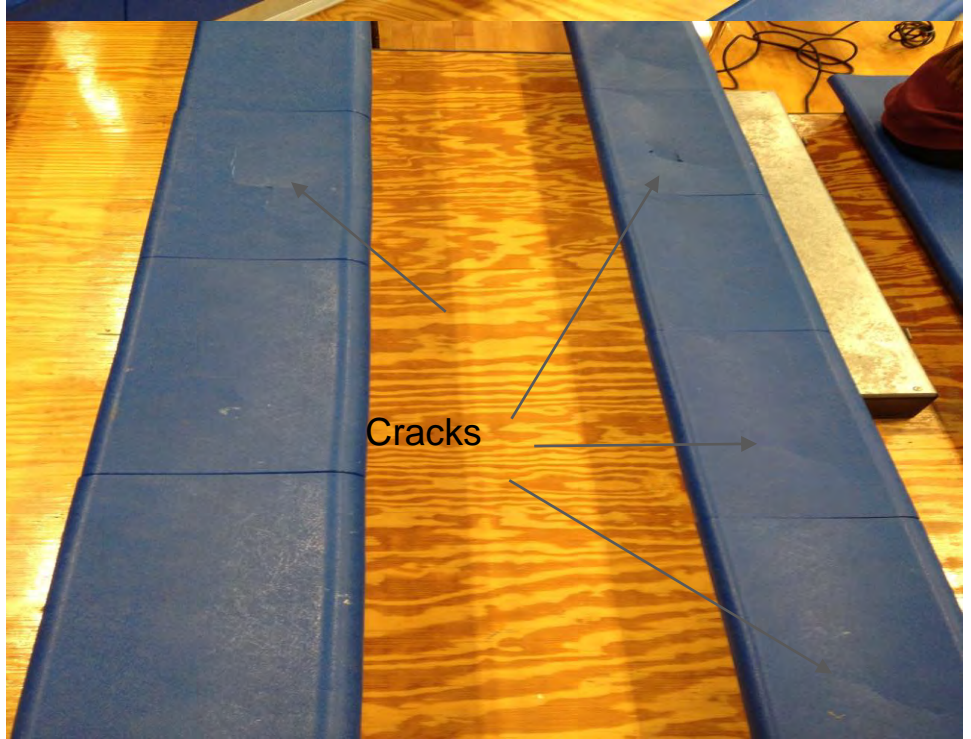
Activities

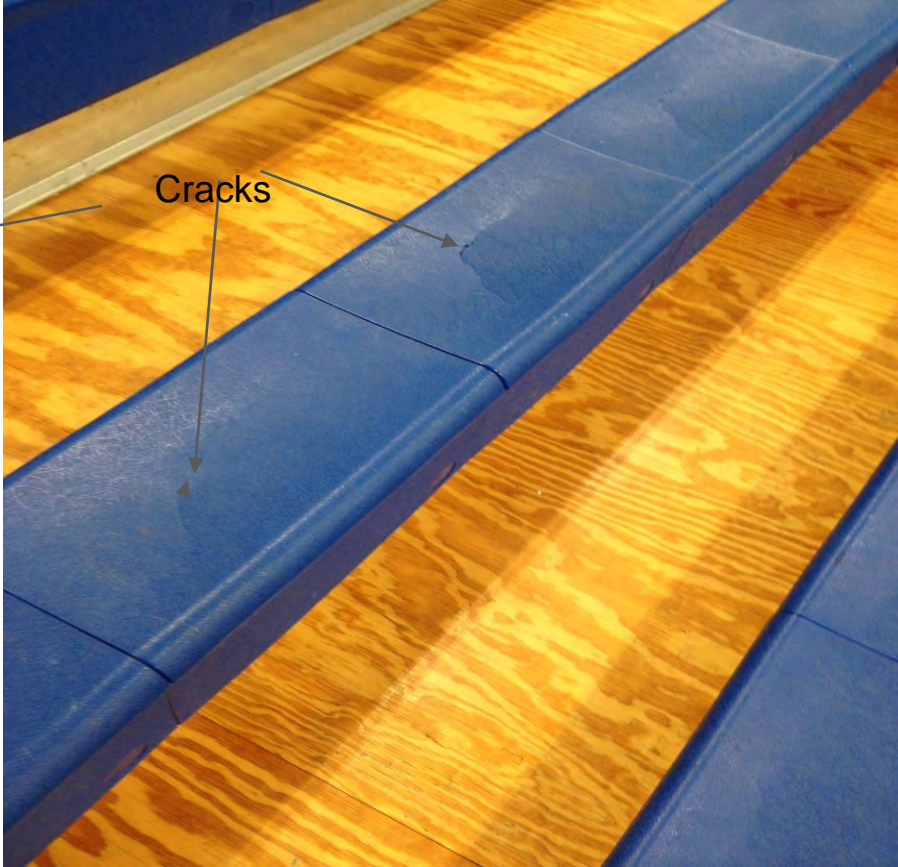
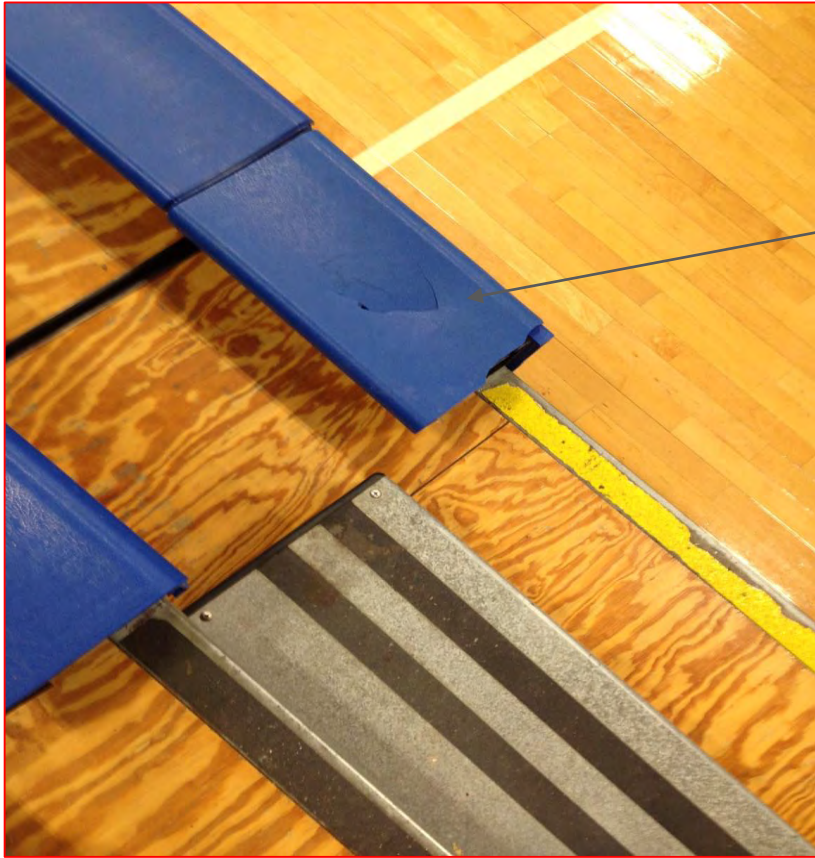
- February 22, 2018 – Attended the Cooperative 90's Board Meeting in Deerfield, IL

Millburn Plow Truck Estimated Cost	
2018 Ford F250 XL 4x2 Regular Cab Standard Package	\$ 20,940.00
OPTIONS	
4 X 4 Option	\$ 2,453.00
Snowplow Prep Package	\$ 79.00
Exterior Back-Up Alarm	\$ 140.00
Cab Steps Regular Cab 18B	\$ 320.00
Extra Heavy Alternator	\$ 85.00
LT245/75Rx17E all terrain tires	\$ 165.00
Spray-in Bed Liner	\$ 595.00
Rust proof & Undercoat	\$ 389.00
Extra Key - No Remote	\$ 45.00
Delivery	\$ 275.00
License & Title M Plate	\$ 175.00
Cloth Seat 40/20/40	\$ 100.00
Trailer Brake Controller	\$ 360.00
TOTAL OPTIONS	\$ 5,181.00
VEHICLE COST WITH OPTIONS	
	\$ 26,121.00
ADDITIONAL ITEMS	
Snow Box for Salting	\$ 7,000.00
Plow	\$ 6,000.00
Air Bags to handle additional weight in the bed	\$ 650.00
Total Additional Items	\$ 13,650.00
ESTIMATED GRAND TOTAL	\$ 39,771.00

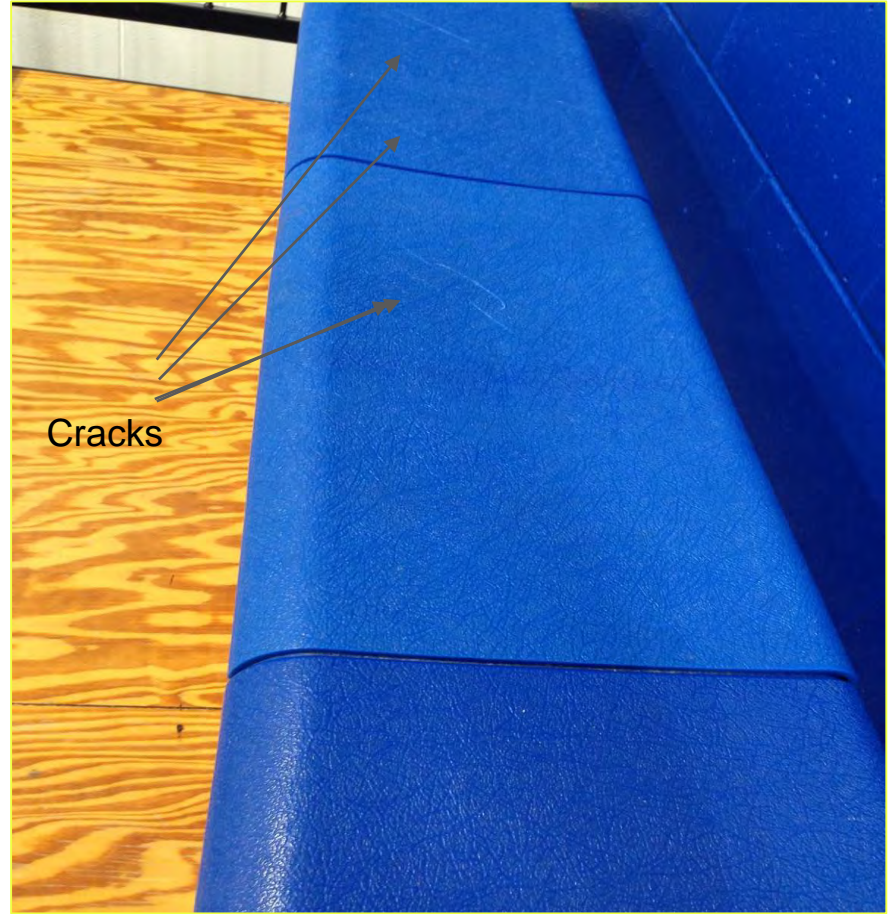
Millburn Middle School

Damaged Bleachers









Cracks







Damaged
sides



